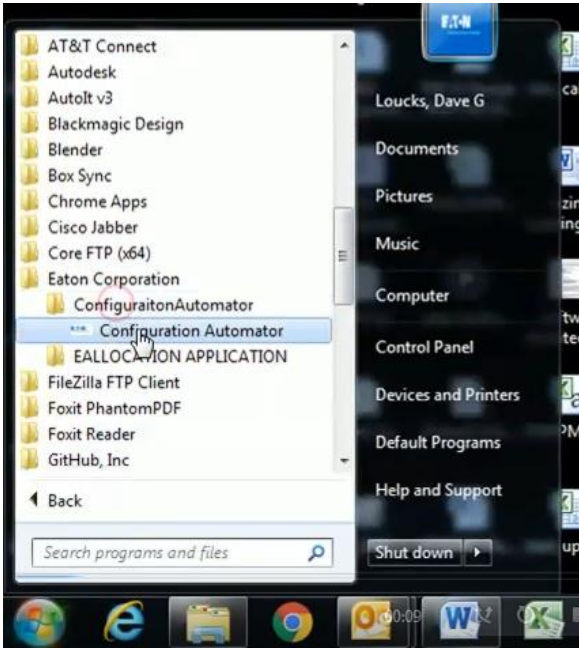


Part 2: Configuration Automator Tool Usage

January 3, 2017

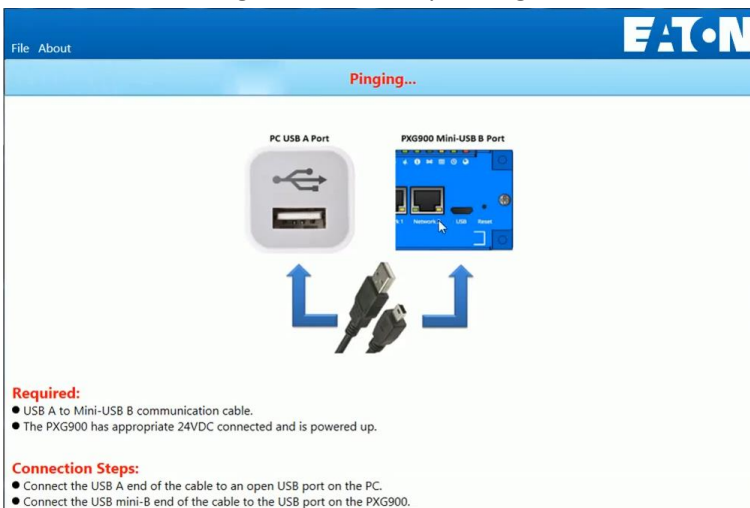
1. Locate and open the Eaton PXG Configuration Automator that was installed on your computer. It will be located under Eaton Corporation > ConfigurationAutomator > Configuration Automator



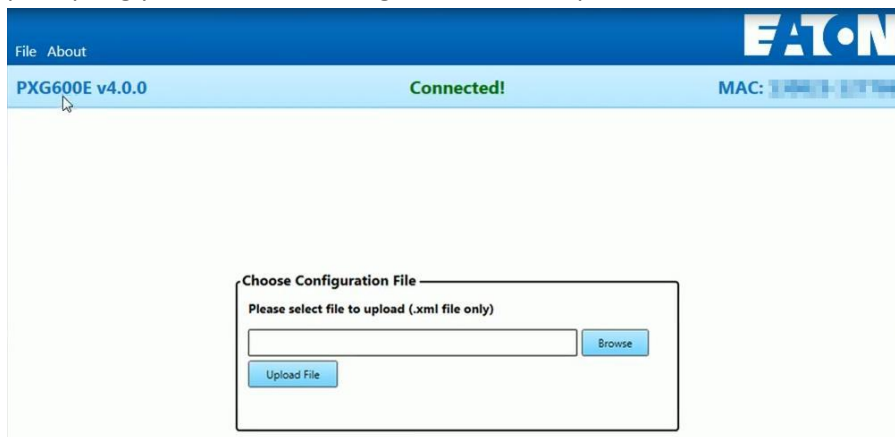
2. If you haven't already connected a USB to micro-USB cable between your computer and a powered PXG, when the program starts you will see "Pinging" but it won't connect to the PXG.



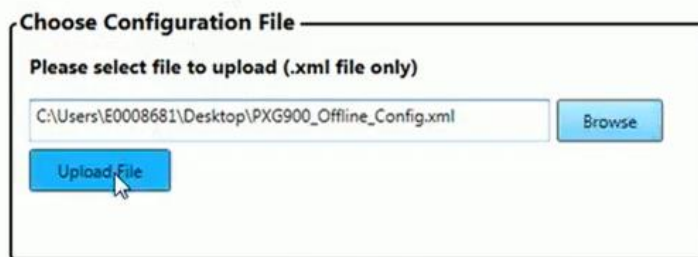
If, after several attempts, the program is unable to connect to the powered gateway you will see instructions showing how to hook up the right cables to connect your computer to the PXG



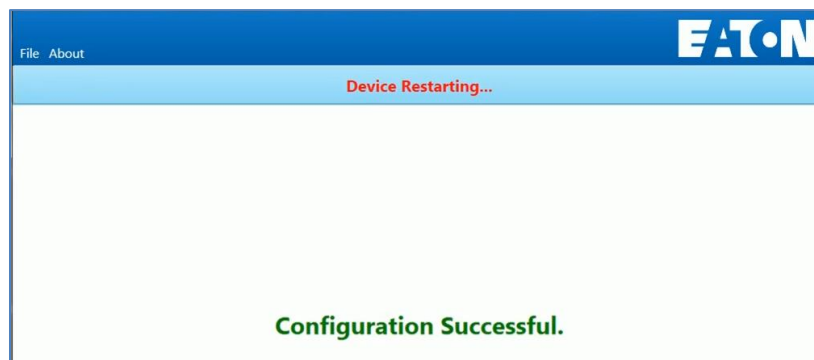
- Once a connection has been made (we are assuming you have followed the steps outlined in Part 1 of this tutorial to load the correct drivers!), you are then presented with a screen prompting you to select a configuration file to upload to the PXG



- Navigate to the location where you have a file and select that proper file, then press Upload File



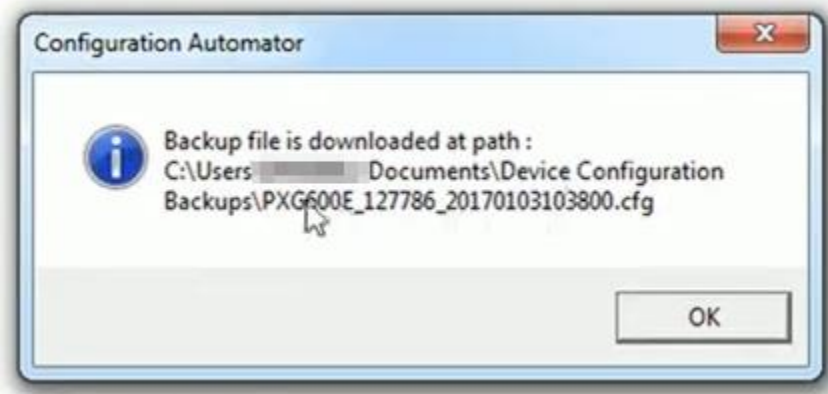
- After a few seconds (<10), you should receive confirmation that the file was uploaded and that the PXG is automatically rebooting.



- Once the device restarts, you can select (if you choose) Backup Configuration to store an as-left configuration file

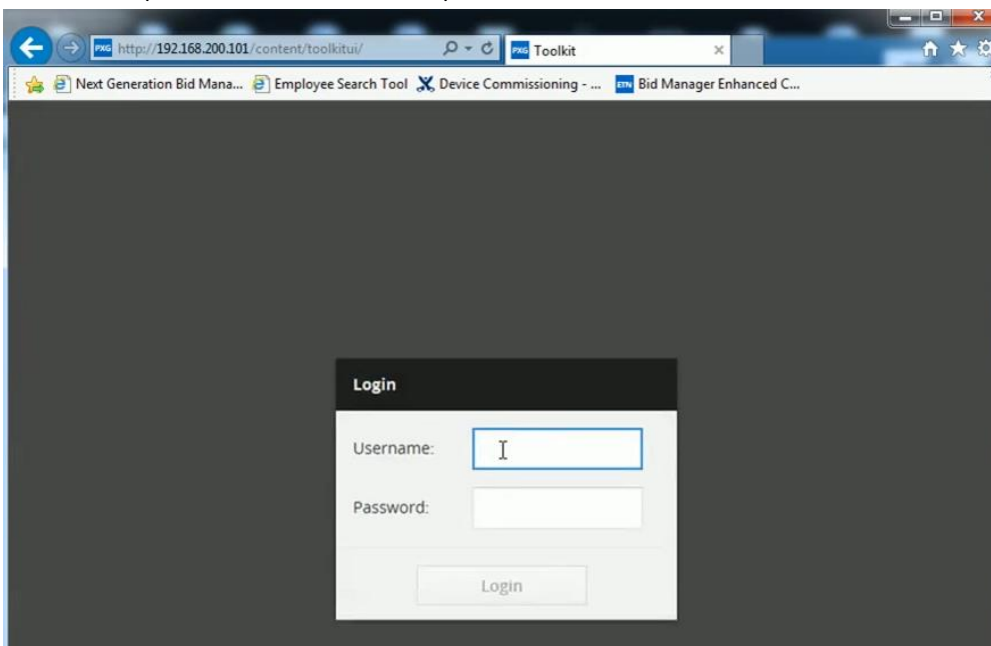


This file is stored in the user's \Documents\Device Configuration Backups directory



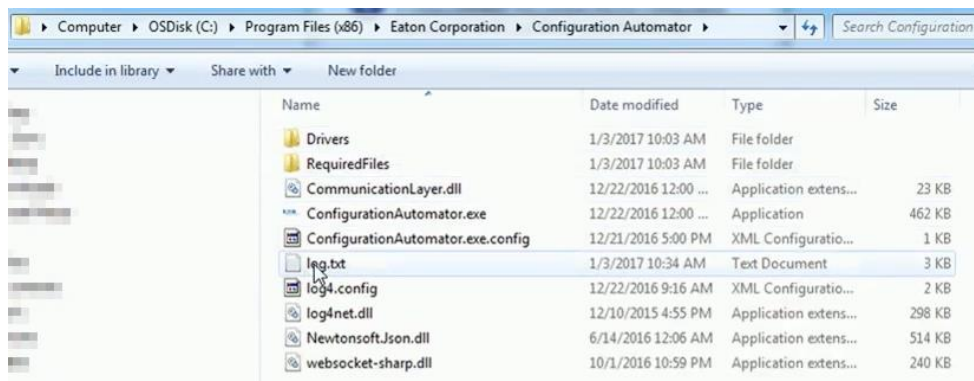
This file can be restored to the PXG, but must be done using the PXG web interface, not this loader (this program only supports XML formats and this backup file is a different format)

7. To make this convenient, choose Open Browser to automatically opens a browser pointing to the correct (default 192.168.200.101) IP address of the PXG

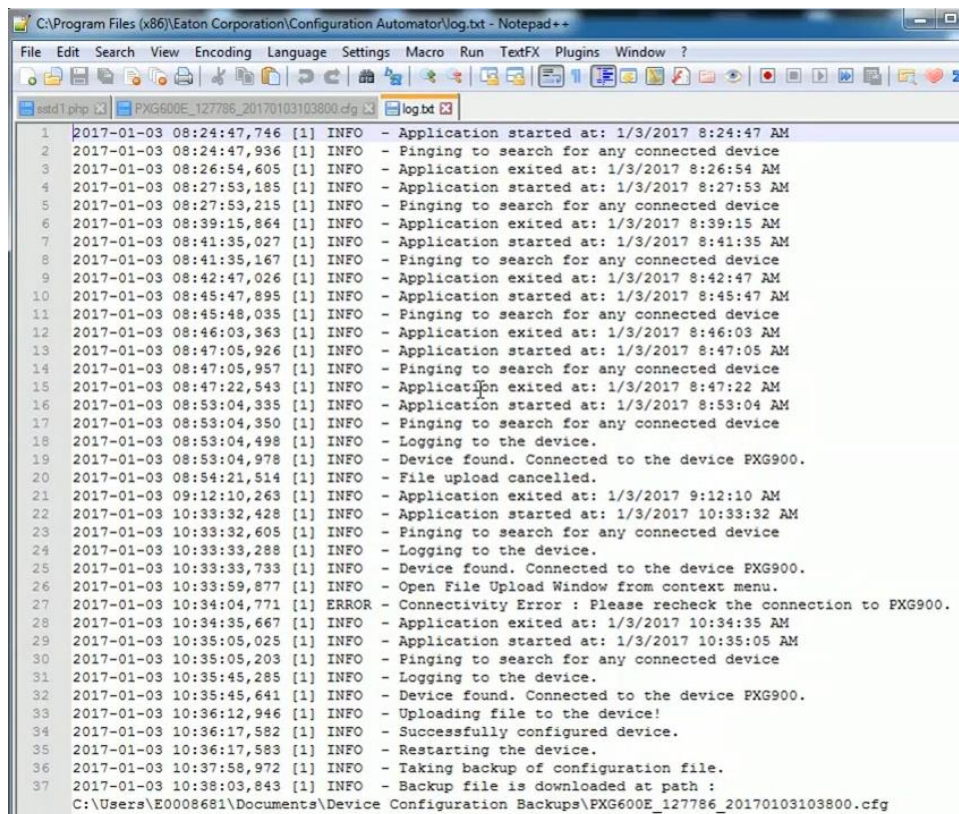


You will need to enter the proper credentials (admin/admin).

8. Note that all actions (and errors) are stored to a log file that can be accessed in the same directory where this program was loaded



The content within the log file is stored as text.



9. If you are programming more than one PXG, connect that new PXG to the USB connection, and navigate to the File > Upload Configuration to begin the process of configuring that new PXG

