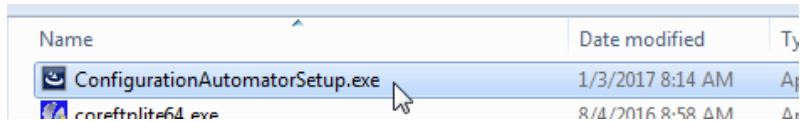


Part 1: Configuration Automator Tool

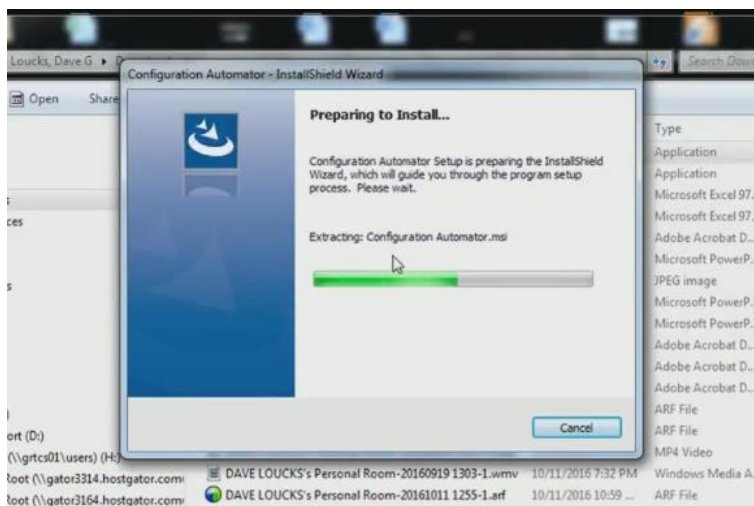
A. Initial Software Installation

January 3, 2017

1. Locate and open the [ConfigurationAutomationSetup.exe](#) file



2. Click through the various prompts to confirm you want to install the program. **ADMIN RIGHTS ARE REQUIRED.**



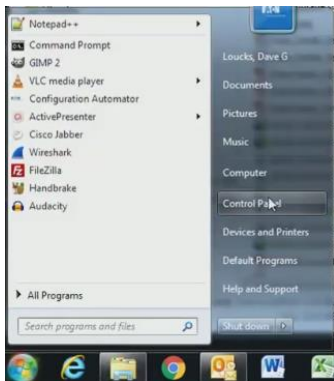
3. If you see an error message saying it can't confirm the publisher of the driver software, select "Install this driver software anyway"



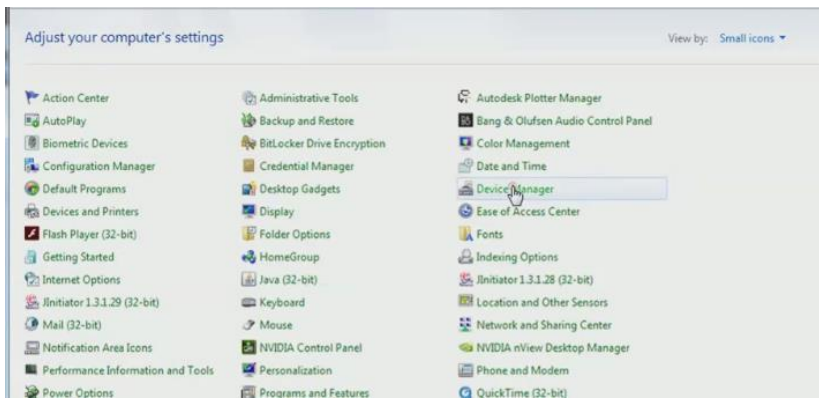
After completion of this step, the software will have been installed.

B. Validating Software Installation

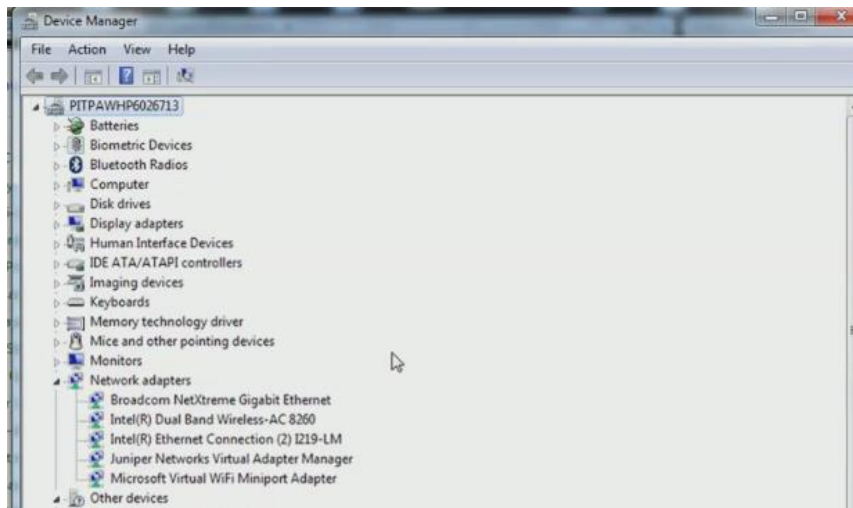
1. Click on Windows Start button and choose Control Panel



2. Select Device Manager



3. Open Network Adapters and, unless you have already connected and powered a gateway, you'll not see any Linux USB Ethernet device driver listed



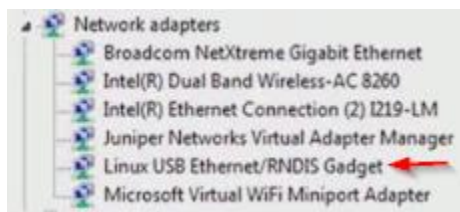
4. To make the driver actually install you must connected a USB cable between your computer and a powered PXG. When you do this you will notice that Windows begins installing the device driver.



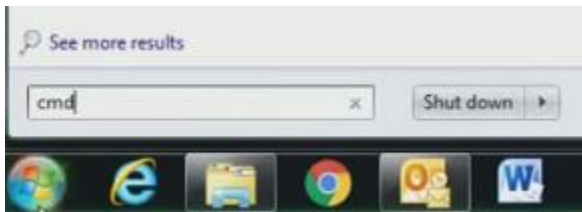
Once it has finished installing, you will receive a notification of success



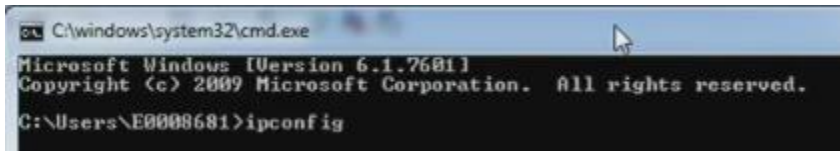
5. Go back to the Device Manager screen and you will see that the Linux USB Ethernet device driver has installed



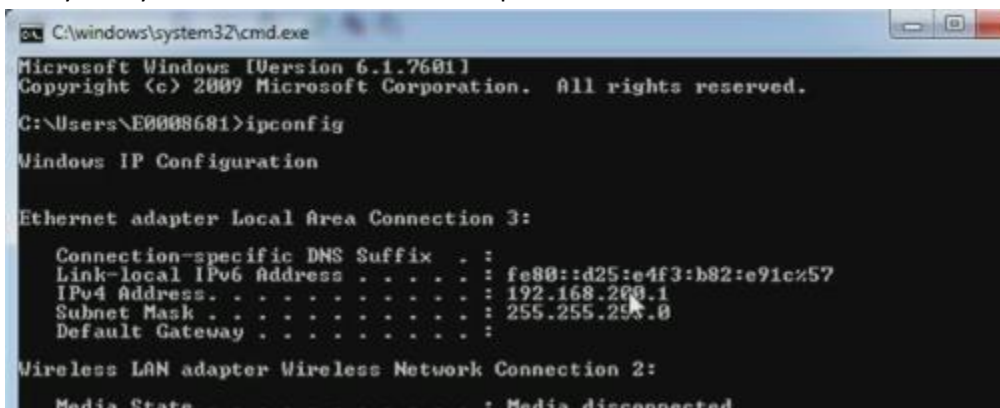
6. To confirm that this new “virtual” Ethernet port (using the USB connection) is active, open a Command window by clicking on the Windows Start button and then typing **cmd** in the run window



7. When the command prompt window opens, type **ipconfig** and press Enter ↵



8. Verify that you can see an “Ethernet” adapter with the IP address of 192.168.200.1



If you see it, you have confirmed that the device driver software has been loaded.

Note that these steps must only be performed one time.

In the next tutorial we will show how to use the Configuration Automator program to load settings into the Power Xpert Gateway.