

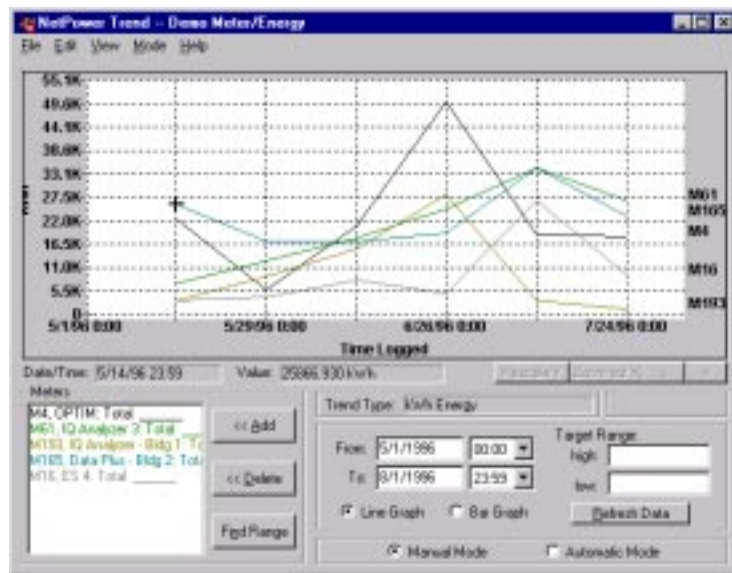
Chapter 4: Manually Generating, Viewing, and Managing Plots

Generating a Plot Manually

You can generate a plot manually or automatically. The procedure for generating plots automatically is described in *Chapter 5: Using the Automatic Scheduler*.

To generate a plot manually, do the following:

1. If it is not already open, open the group for which you wish to generate the plot. For information about opening a plot group, see *Chapter 3: NetPower Trend Plot Groups*.



NetPower Trend opens the plot group and plots the information in a line graph, by default.

2. If you want to see a bar graph of the information, select the Bar Graph radio button.

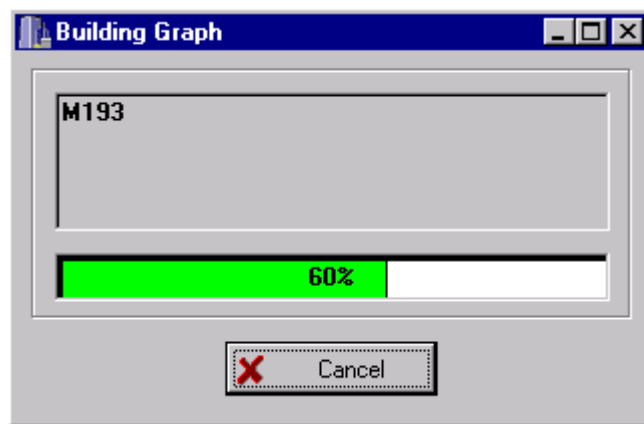
3. Click Refresh Data.

NetPower Trend generates the plot of the group you selected.

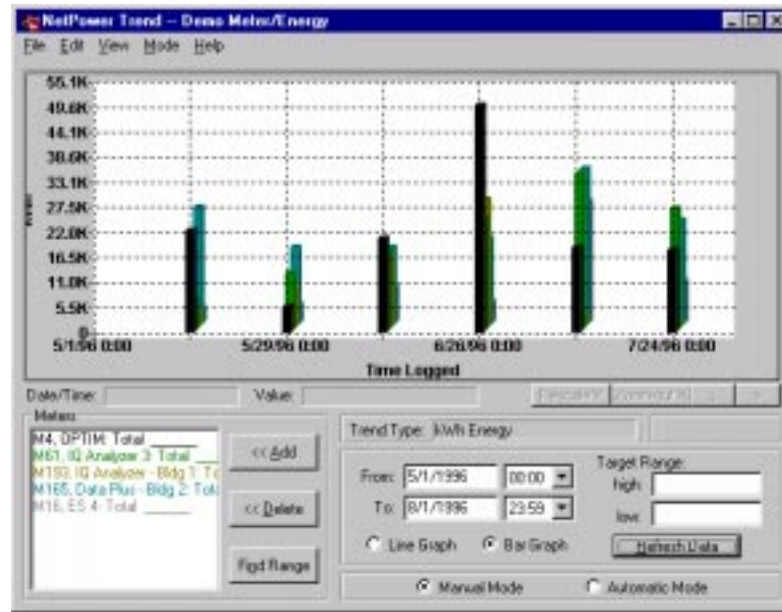
Note

If the settings you specified would result in a plot that exceeds the internal limits of the program, NetPower Trend advises you to change the settings. For more information, see *Appendix B: Memory Considerations*.

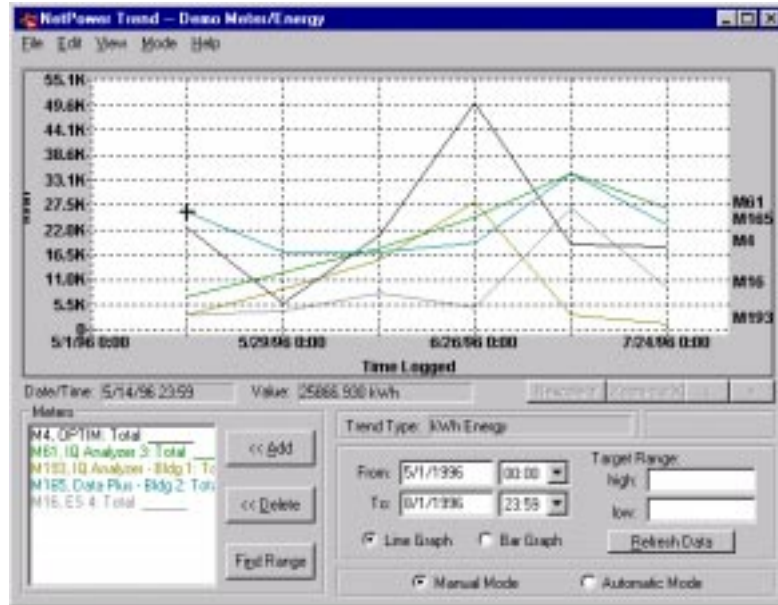
While creating the plot, NetPower Trend displays the Building Graph dialog box.



NetPower Trend then displays the plot.



Viewing a Plot

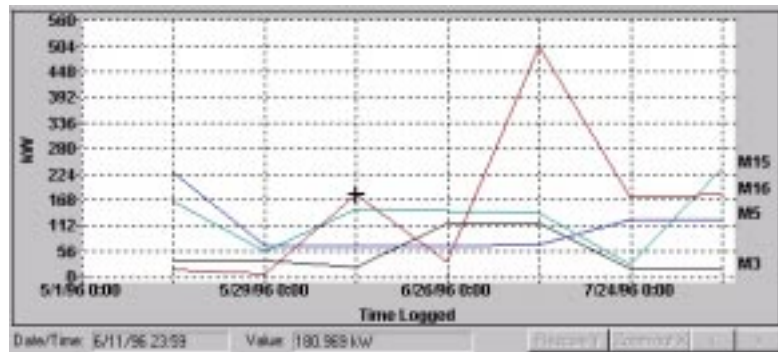


If the trend type of a plot is Billing Period, only the billing periods that are within the start and end date-time appear on the plot.

If the type of plot is a line graph, each line is labeled in the right margin with the corresponding meter or energy user.

Cross Hairs

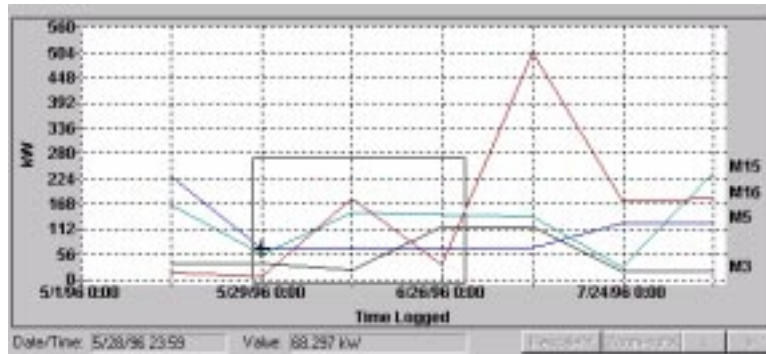
The cross hairs show you the x-axis and y-axis values for the point on the plot that they occupy. The kilowatt, kilowatt-hour, kilovolt-amp, or kilovolt-amp-hour value for the current position of the cross-hairs displays in the Value field below the plot. The date and time that the data was logged (or the end date/time for Billing Period) show in the Date/Time field.



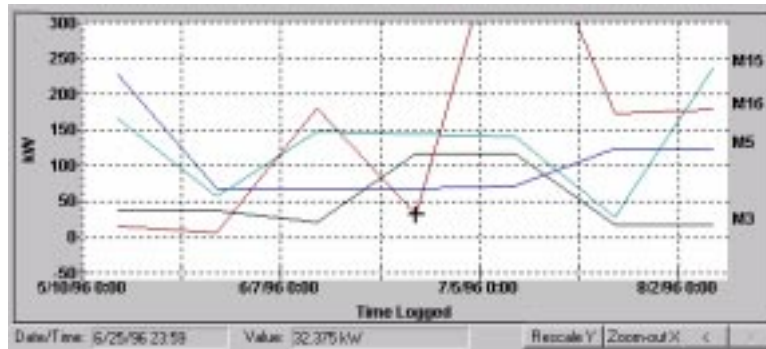
You can move the cross hairs by moving the mouse pointer. The cross hairs are always on the data point on the plot that is nearest to the mouse pointer.

Zooming

You can zoom in and out to get a closer look at selected areas of the plot. To zoom in on an area of interest, drag-click (i.e., click and hold down the left mouse button) the mouse pointer to define a rectangle enclosing the area on which you want to zoom in.



NetPower Trend zooms in on the area you defined and redisplay the plot.



To zoom out, click the Zoom Out X button on the NetPower Trend main window. NetPower Trend zooms out.

Note

The zoom-out limit is the scale of the original time period.

To restore the plot to the original magnification, choose Original Settings from the View menu of the NetPower Trend main window.

The following table lists the progression of predefined zoom settings:

Time Period	Time Per Division	Start On
52 weeks	8 weeks/division	any date at 0:00
26 weeks	4 weeks/division	any date at 0:00
13 weeks	2 weeks/division	any date at 0:00
4 weeks	4 days/division	any date at 0:00
2 weeks	2 days/division	any date on the hour
1 week	1 day/division	any date on the hour
4 days	12 hours/division	any date on the hour
2 days	8 hours/division	any date on the hour
1 day	4 hours/division	any date on the hour
12 hours	2 hours/division	any date on the half hour
6 hours	1 hour/division	any date on the half hour
3 hours	30 minutes/division	any date on the half hour
1 hour	10 minutes/division	any date 1/4 hour

Scrolling

Initially NetPower Trend fits the entire time period that you specify into the plotting area. If you zoom in, you can scroll to the left or to the right one division at a time, using the < and > buttons.



Rescaling the Y-axis

The y-axis can change when you zoom in, depending on the rectangle you choose when you zoom in. However, zooming out does not always restore the original y-axis scale. To rescale the y-axis to include all the data points for the current x-axis, click Rescale Y.

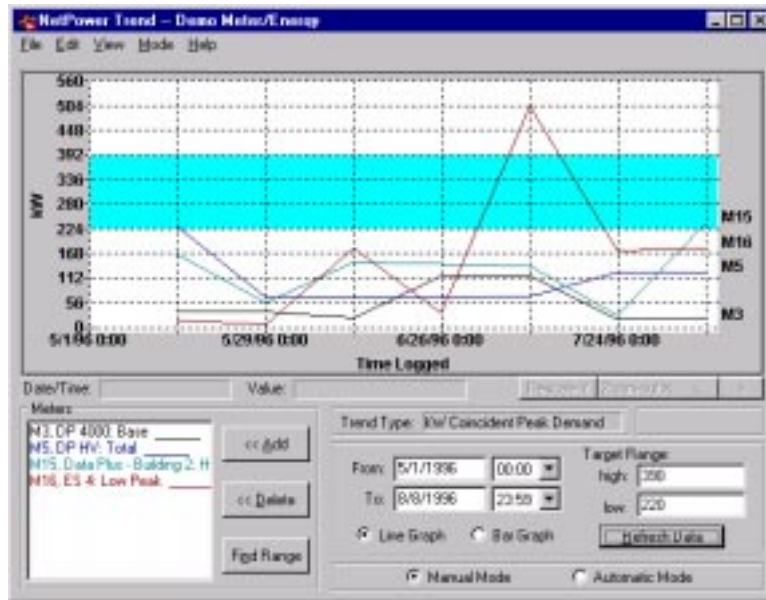
Indicating a Target Range

To enter a target range, do the following:

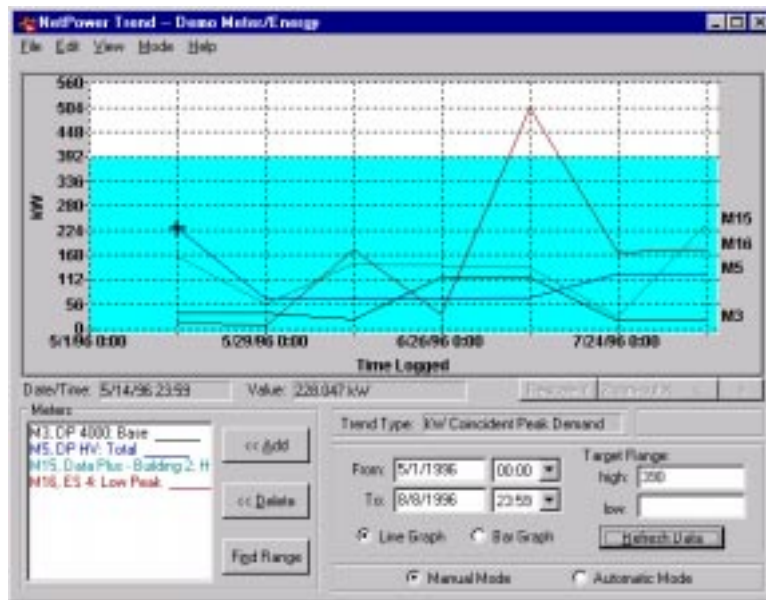
1. In the Target Range high and/or low fields on the NetPower Trend main window, type a range.

2. Click Refresh Data.

When you enter both high and low values, the system shades the region between the target values you entered.



If you enter only a high or only a low, the system shades the area from the target value you specified to the edge of the plot.



This feature can make it easier to see utilization that falls outside target ranges.

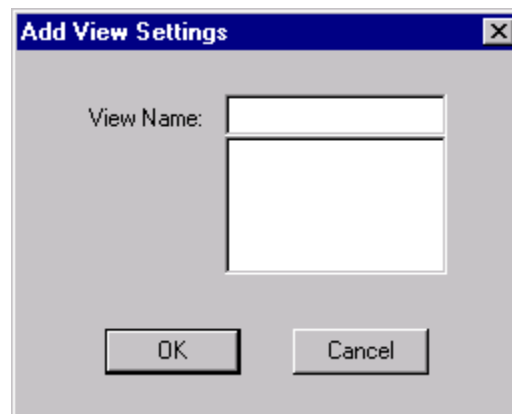
Saving a Specific Plot View

You can save a specific plot view and redisplay it at a future point. NetPower Trend associates a descriptive name you enter with the image of the plot, then saves the image of the plot as a Microsoft Windows metafile.

To add a plot view name and save the plot view of the current plot, do the following:

1. From the View menu of the NetPower Trend main window, select Add.

The Add View Settings dialog box displays.



2. In the View Name field, type the plot view name that you want to associate with the current plot.

Note

The view name must be one to eight alphanumeric characters. The plot view name "page1" is reserved for use by NetPower Trend.

3. Click OK.

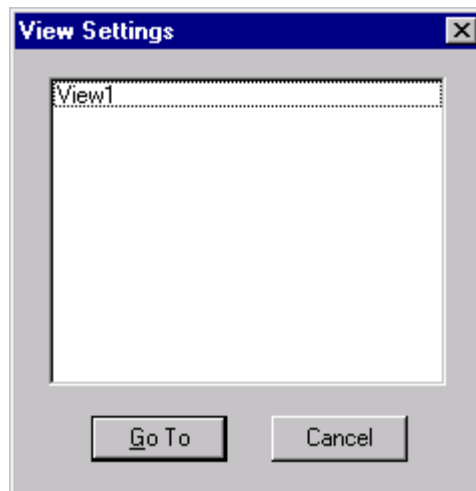
NetPower Trend saves the view of the plot and associates it with the view name you specified.

Viewing a Previously Saved Plot

To view a previously saved view, do the following:

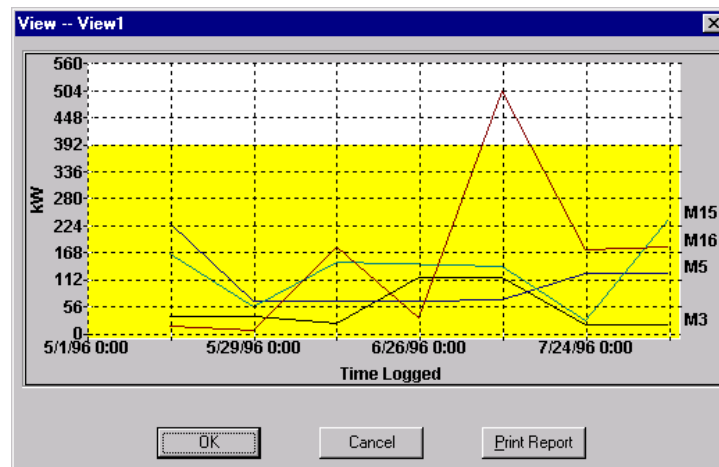
1. From the View menu of the NetPower Trend main window, select GoTo.

The View Settings dialog box displays.



2. Select the name of the view you want to see.
3. Click GoTo.

The View dialog box displays the plot view you selected.



Printing a Plot View

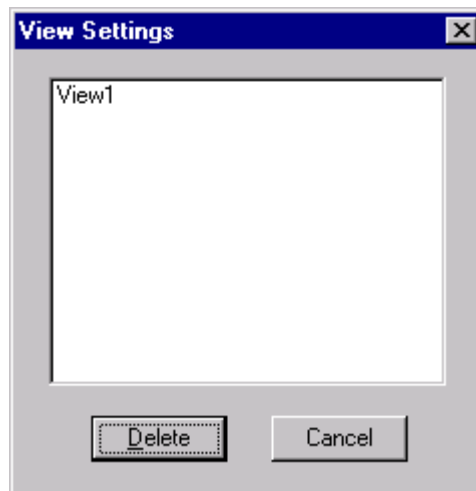
To print the plot view, click Print Report. NetPower Trend sends the plot to the default printer.

Deleting a Previously Saved Plot

To delete a plot view from NetPower Trend, do the following:

1. From the View menu of the NetPower Trend main window, select Delete.

The View Settings dialog box displays.



2. Select the plot view you want to delete.
3. Click Delete.

NetPower Trend deletes the plot view.

Important

There is no delete confirmation dialog box. You cannot cancel the deletion once you click Delete. Although this procedure deletes the saved view, the data the plot was based on is unaffected.

Printing a Plot

You can print a report that contains the plot and a variety of associated information. To print the plot, select Print from the File menu on the NetPower Trend main window.

NetPower Trend generates a printed report and sends it to your default printer.

Copying a View Plot Graph to the Clipboard

NetPower Trend supports the copy command, which allows you to copy plot view graphs onto the windows clipboard. From the clipboard, you can copy the plot view graph to another application, such as a graphics or word processing package.

To copy the plot view graph to the clipboard, do the following:

1. Display the desired plot view graph.
2. From the Edit menu on the NetPower Trend main window, select Graph to Clipboard.

NetPower Trend copies the plot view graph to the clipboard.