

## Chapter 3: NetPower Trend Plot Groups

---

### Creating a New Plot Group

If you are running NetPower Trend for the first time, you must create one or more plot groups before you can use the plotting features. A plot group associates types of data and plotting methods with a name to ensure that the type of data taken from the database is consistent within a plot group.

A plot group can contain one to 12 meters or one to 12 energy users.

You can build plot groups that consist of either energy users or meters, but you cannot have both energy users and meters in the same plot group.

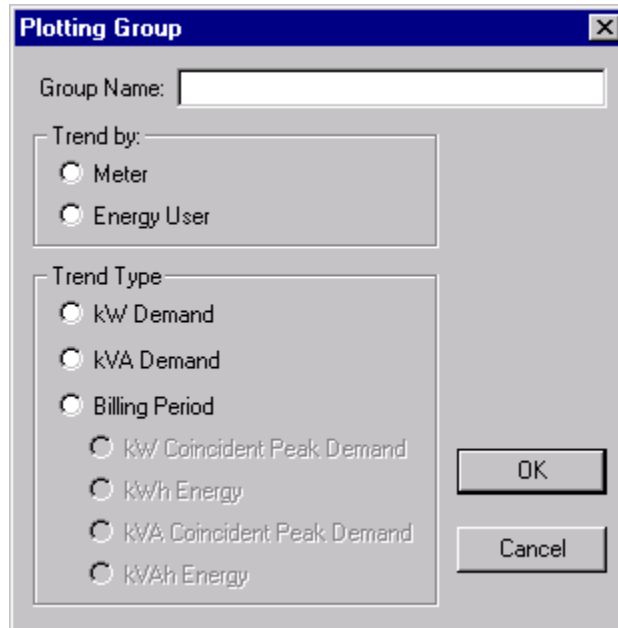
**Note**

The Energy User and Billing Period options are disabled if NetPower Billing is not installed on your system.

To create a new plot group, do the following:

1. From the File menu of the NetPower Trend main window, select New.

The Plotting Group dialog box displays.



2. In the Group Name field, type a unique name to identify the plot group.
3. From the Trend By radio buttons, select an object to trend by.

**Note**  
If you click Meter, you are building a group with individual meters. If you click Energy User, you are building a group with energy users.

4. From the Trend Type radio buttons, select the type of trend data that you want to plot.

If you select Billing Period, you must then select either kW Coincident Peak Demand, kWh Energy, kVA Coincident Peak Demand, or kVAh Energy.

Energy is the energy consumed during the billing period, while Coincident Peak Demand is the maximum of all coincident demand readings logged over the term of the billing period.

**Important**  
Select the trend type carefully. Once defined, you cannot change it for the group without re-specifying the whole group.

5. Click OK.

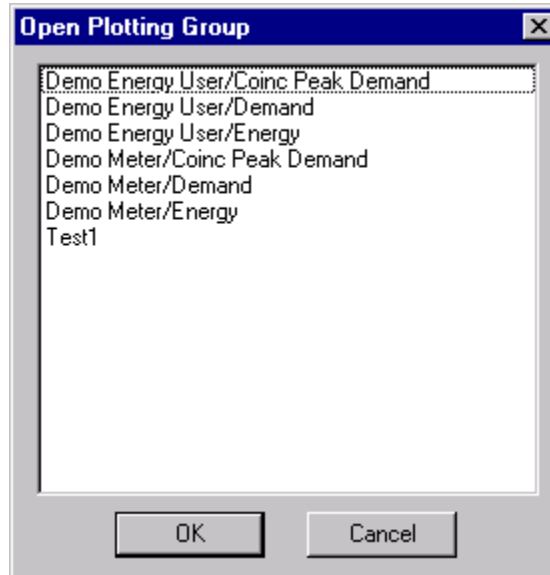
NetPower Trend creates the group, returns you to the NetPower Trend dialog box, and updates the Trend Type field with your selection. You can now add meters or energy users to the plot group. For more information, see the section *Adding a Meter or Energy User to a Plot Group*.

## Opening an Existing Plot Group

To open a plot group, do the following:

1. From the File menu of the NetPower Trend main window, select Open.

The Open Plotting Group dialog box displays.

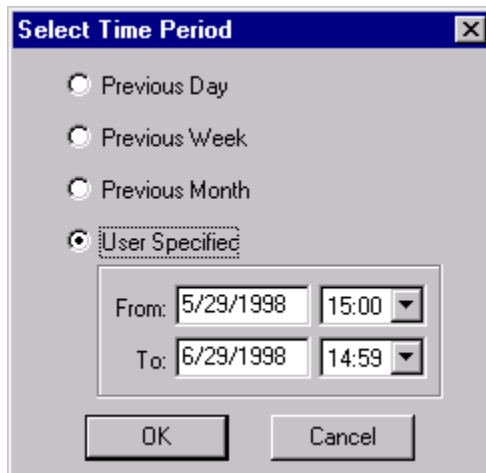


2. Select the plot group you wish to open.
3. Click OK.

**Note**

You can also open a plot group by double-clicking on the name.

The Select Time Period dialog box displays.



4. Select the time period you want to plot.

Initially, the dates and times of the last plot generation are shown in the From and To boxes.

If you select Previous Day, Previous Week, or Previous Month, the To box automatically updates with the current date-time.

**Note**

The current date-time is rounded back to the previous hour and 59 minutes.

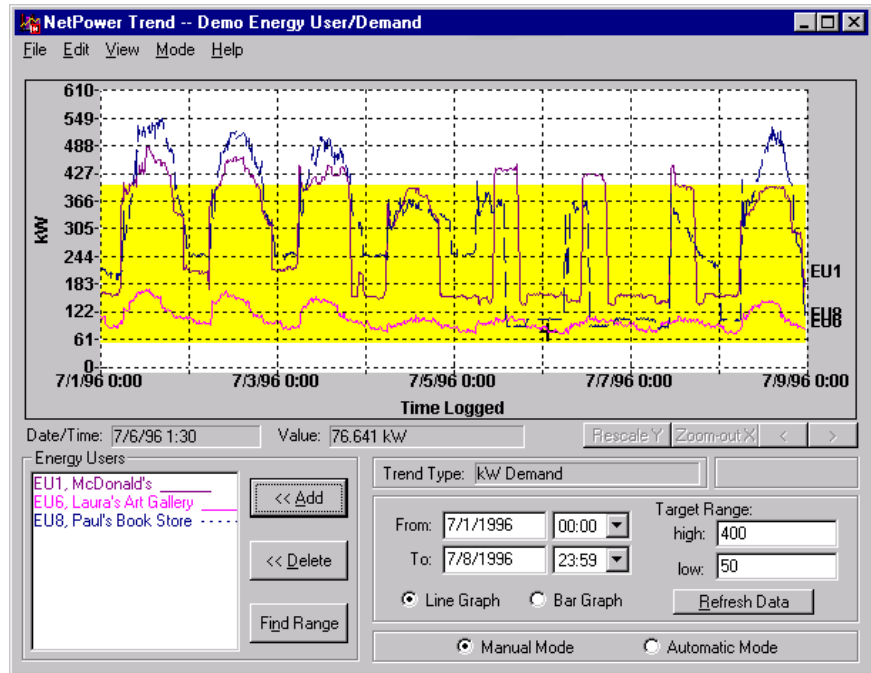
If you select User Specified, the From and To boxes are enabled and you can enter your own plot date-time range in the boxes.

5. Click OK to accept the time period you specified.

**OR**

Click Cancel to accept the dates and times of the last plot generation.

NetPower Trend loads the plot group you selected, returns you to the main NetPower Trend dialog box, and updates the items in the group list box, Trend Type field, and the From and To boxes with your selections.



## Adding a Meter or Energy User to a Plot Group

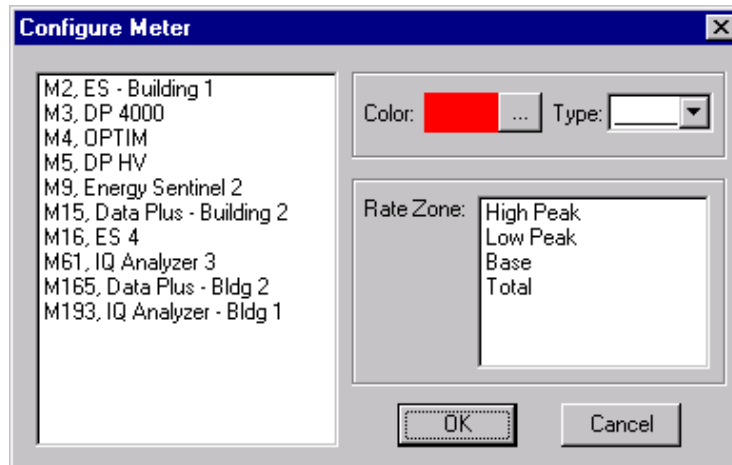
After a plot group is created, you can add or delete energy users or meters (depending on the type of plot) to the plot group.

### Adding a Meter

To add a meter to a plot group, do the following:

1. If it is not already open, open the group to which you want to add a meter.
2. Click Add.

The Configure Meter dialog box displays.



NetPower Trend lists the available meters.

**Note**  
 If the Trend Type of the group is Demand, the Rate Zone selection box does not display.  
 The maximum number of meters that you can plot at one time is 12.

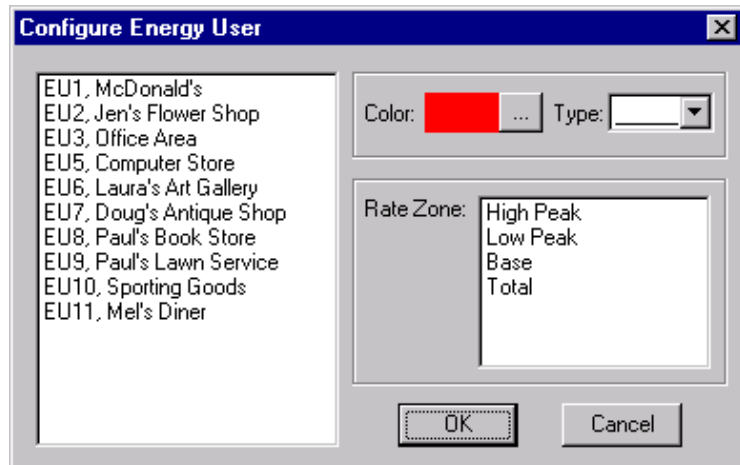
3. From the list box on the left-hand side of the dialog box, select the meter you want to add to the group.
4. If the trend type of the group is Billing Period, specify a rate zone.
5. Specify the following:
  - ◆ Line color  
The default line color is red.
  - ◆ Line type  
The default line type is a solid line.
6. Click OK.

NetPower Trend closes the dialog box and updates the Meters list box on the NetPower Trend main window with the new information.

### Adding an Energy User

To add an energy user to a plot group, do the following:

1. If it is not already open, open the group to which you want to add an energy user.
2. Click Add.  
The Configure Energy User dialog box displays.



NetPower Trend lists the available energy users.

**Note**

If the Trend Type of the group is Demand, the Rate Zone selection box does not display.

The maximum number of energy users that you can plot at one time is 12.

3. From the list box on the left-hand side of the dialog box, select the energy user you want to add to the group.
4. If the trend type of the group is Billing Period, specify a rate zone.
5. Specify the following:
  - ◆ Line color  
The default line color is red.
  - ◆ Line type  
The default line type is a solid line.
6. Click OK.

NetPower Trend closes the dialog box and updates the Meters list box on the NetPower Trend main window with the new information.

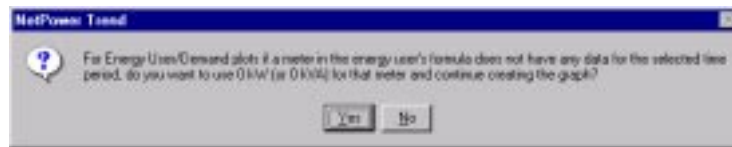
## Configuring Meter Replacement

When a meter in an energy user formula has no data for a selected time period, the energy user also has no data, as the demand plot for the energy user cannot be calculated without data points. NetPower Trend has the ability to replace the lack of data of a meter in an energy user formula with the data point of 0kW so that the energy user data can be calculated.

To configure a global meter replacement, do the following:

1. From the Edit menu of the NetPower Trend main window, select Configure Meter Replacement.

A NetPower Trend dialog box displays, confirming your request to use the data of 0kW for meters without data in an energy user's formula for the selected time period.



**Note**

The dialog box also displays the first time you create an energy user/demand plot group.

2. Click Yes.

If you select No, the meter is not replaced.

NetPower Trend uses 0kW as the data for meters without data in an energy user's formula for all future plot view graphs.

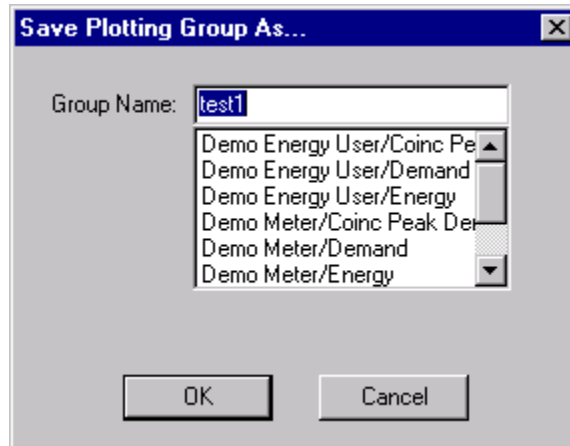
## Saving a Plot Group

To save a plot group, do the following:

1. From the File menu of the NetPower Trend main window, select either Save or Save As.

If you select Save and the plot group is a new plot group, or if you select Save As, the Save Plotting Group As dialog box displays.





2. In the Group Name field, type a group name.
3. Click OK.

NetPower Trend saves the plot group.

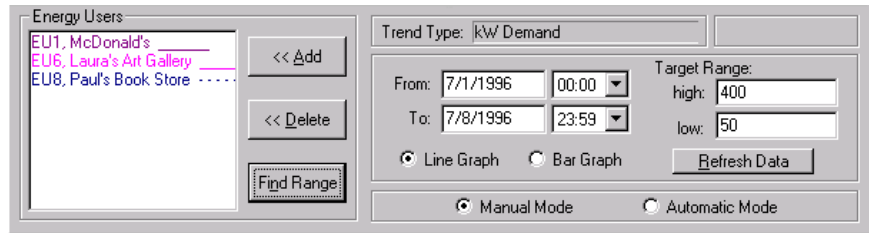
## Finding the Valid Range of a Plot Group

You can direct NetPower Trend to determine the range of a plot group by searching the Energy Logging (E-LOG32) database or the NetPower Billing (E-BILL32) database. For each object in the plot group (energy user or meter), NetPower Trend searches the appropriate database to find the oldest entry and the most recent entry for the object. If there is only one object in the plot group, NetPower Trend uses the dates and times from that object as the From and To values in the NetPower Trend main window. If there are multiple objects in the group, NetPower Trend uses the oldest of the entries found for all objects as the From value and the most recent of the entries for the To value.

To direct NetPower Trend to determine the range of a plot group, do the following:

1. If it is not already open, open the plot group for which you want NetPower Trend to determine the range.
2. Click Find Range.

NetPower Trend performs the search, and updates the From and To fields with the dates and times it found in the search.



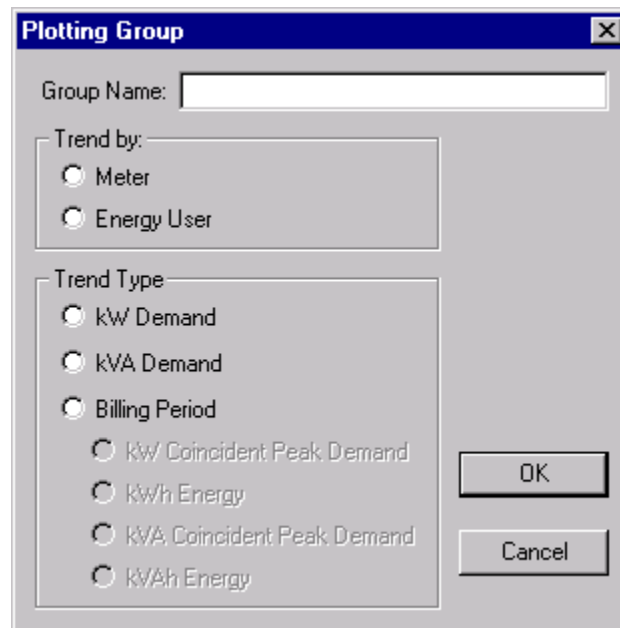
## Copying the Configuration of an Existing Plot Group

NetPower Trend has an edit feature that allows you to copy the configuration of an existing plot group to a plot group you are defining. You can save time in creating a new plot group if a plot group that already exists has all or most of the characteristics you want. You can copy the configuration, then make the changes that are necessary, such as adding or deleting energy users or meters and changing line types or line colors.

To copy the configuration of an existing plot group, do the following:

1. From the File menu of the NetPower Trend main window, select New.

The system displays the Plotting Group dialog box.



**Note**

For more information on creating a new plot group, see the section *Creating a New Plot Group*.

2. In the Group Name field, type a unique name to use to identify the plot group.
3. From the Trend By radio buttons, select an object to trend by.
4. From the Trend Type radio buttons, select the type of trend data that you want to plot.

If you select Billing Period, you must then select either kW Coincident Peak Demand, kWh Energy, kVA Coincident Peak Demand, or kVAh Energy.

Energy is the energy consumed during the billing period, while Coincident Peak Demand is the maximum of all coincident demand readings logged over the term of the billing period.

**Important**

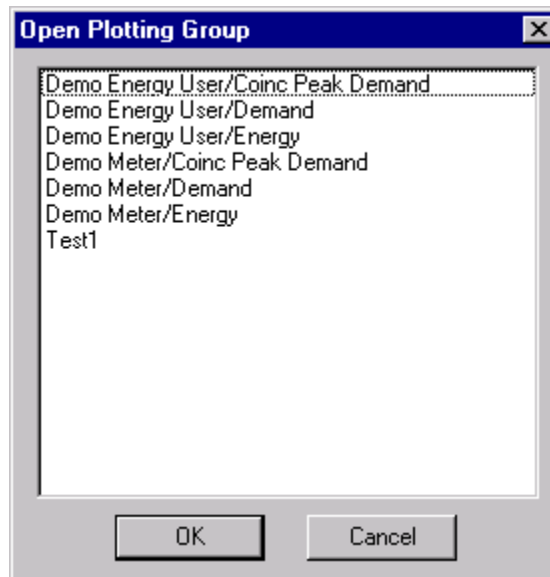
The trend by and trend type you select must match the trend by and trend type of the plot group you are going to copy.

5. Click OK.

NetPower Trend creates the group, returns you to the NetPower Trend dialog box, and updates the Trend Type field with your selection.

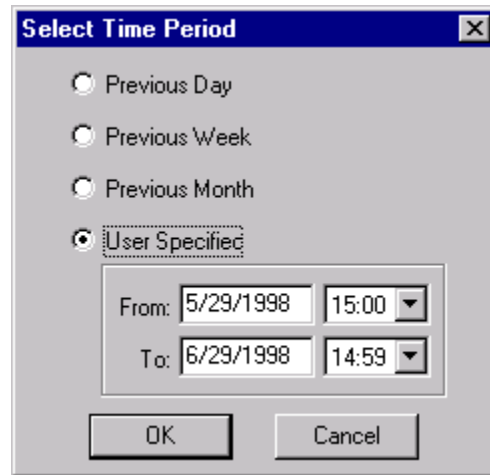
6. From the Edit menu, select Copy From.

The Open Plotting Group dialog box displays.



7. Select the plot group that has the configuration you want to copy.
8. Click OK.

The Select Time Period dialog box displays.



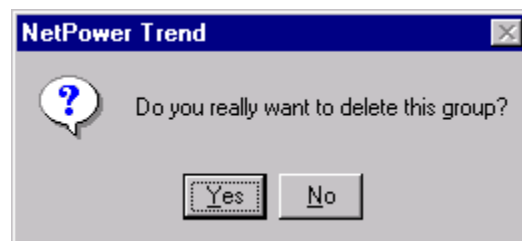
9. Select the time period for which you want to copy the information.
10. Click OK.

The system copies the configuration of the selected plot group to the current plot group, returns you to the main NetPower Trend dialog box, and updates the appropriate fields with the new information.

## Deleting a Plot Group

1. If it is not already open, open the plot group you want to delete.
2. From the File menu of the NetPower Trend main window, select Delete.

The NetPower Trend dialog box displays, verifying the request to delete.



3. Click Yes.

NetPower Trend deletes the plot group information from the main window and from the NetPower Trend database.