

Chapter 2: Getting Started

Software and License Installation

For more information about software installation, see *Chapter 2: Installation* in the *PowerNet Software User's Guide*.

For more information about installing licenses, see *Chapter 7: NetPower License Manager* in the *PowerNet Software User's Guide*.

Running NetPower Trend

Starting NetPower Trend

To start NetPower Trend, choose NetPower Trend from the IMPACC PowerNet Suite program group in the Start menu.

NetPower Trend logs you on and displays the NetPower Trend main window.

Exiting

There are two methods for exiting NetPower Trend:

- ◆ Exiting
- ◆ Exiting and keeping a license

Exiting

When you use the Exit command to exit NetPower Trend, the license is returned to NetPower License Manager.

To exit NetPower Trend using the Exit command, do the following:

1. From the File menu, choose Exit.
NetPower Trend exits, and the license is returned to the NetPower License Manager.

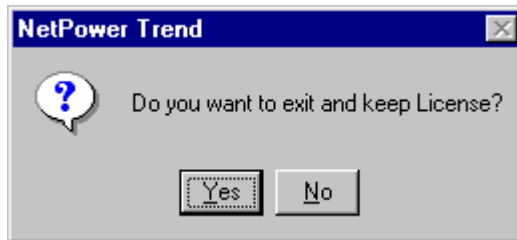
Exiting and Keeping a License

When you use the Exit and Keep License command to exit an application, the license for that application remains on your computer. This allows you to start that application at a later time without having to check out a license.

To exit an application using the Exit and Keep License command, do the following:

1. From the File menu of the application you are running, choose Exit and Keep License.

A confirm dialog box displays, verifying the request to keep the license.



2. Click Yes.

The application exits.

Database Synchronization

When you run NetPower Trend for the first time, and have not set up database synchronization, the Database Synchronization Setup dialog box displays. You must identify the correct pathname to both the Master and Local Configuration and Security databases.

Note

If you have previously run a PowerNet Software application and identified the correct pathname to both the Master and Local Configuration and Security databases, these settings are saved for all applications. Thus, you do not need to set up synchronization when subsequently running a PowerNet Software application.

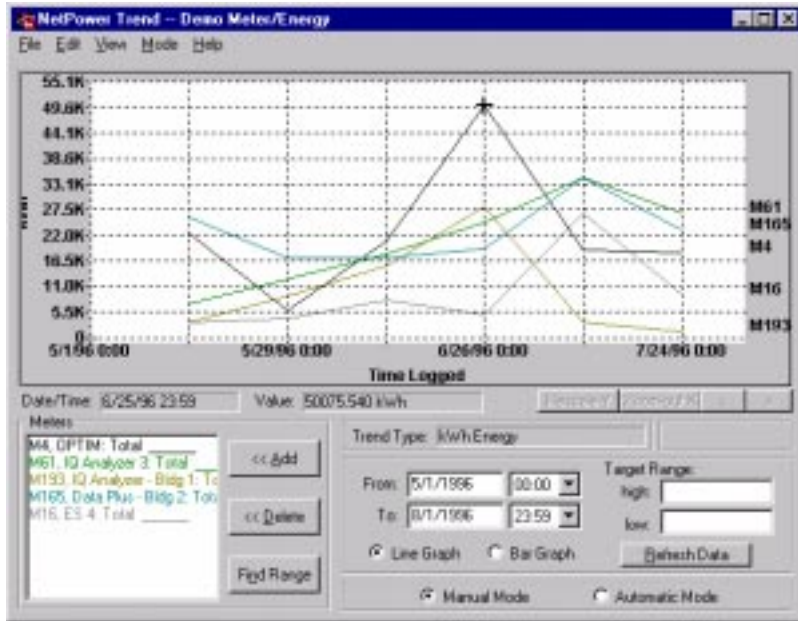
For more information about database synchronization, see *Chapter 5: Database Synchronization* in the *PowerNet Software User's Guide*.

Main Window

From the NetPower Trend main window, you can do the following:

- ◆ Create a new plot group.
- ◆ Open and save plot groups.

- ◆ Configure automatic scheduling.
- ◆ View a plot.
- ◆ Save, print, and delete plot views.



Menu Options

The following table describes the menu options:

Menu Option	Description
File	
New	Allows you to name and define details for a new plot group.
Open	Opens an existing plot group.
Delete	Deletes the current plot group.
Save	Saves the current plot group in the NetPower Trend internal database.
Save As	Saves the current plot group under a new group name.
Print	Prints the current plot to the default printer.
Setup Database Synchronization	Sets up database synchronization.

Menu Option	Description
Exit and Keep License	Exits NetPower Trend without returning the license.
Exit	Exits NetPower Trend and returns the license.
Edit	
Copy From	Copies the configuration of an existing group to the group currently being defined.
Graph to Clipboard	Copies the current graph at the current zoom setting to the clipboard.
Scheduler Configuration	Allows you to configure the Automatic Scheduler.
Configure Meter Replacement	Allows you to replace meters with no data in an energy user's formula with the data point of 0kW (or kVA).
View	
Add	Allows you to save a view.
Delete	Allows you to delete a view.
Goto	Opens the view selection dialog box from which you can select previously saved plot views.
Original Settings	Resets the scale of the x-axis and y-axis to the original setting if you have zoomed in or out.
Mode	
Manual	This menu option switches NetPower Trend to Manual Mode.
Automatic	This menu option switches NetPower Trend to Automatic Mode.
Help	
Contents	Displays the table of contents for on-line help.
Keyword Search	Performs a keyword search.
About	Displays the About NetPower Trend dialog box.

If One or More Databases is Missing

NetPower Trend depends on access to specific databases for specific functions. Consequently, if NetPower Trend cannot access a database,

the associated functionality is disabled. However, NetPower Trend can do all of the processing that is possible with the available databases. The following table shows the functionality of NetPower Trend when one or more databases is missing:

Missing Database	NetPower Trend Functionality
E-LOG32 (englog32.mdb)	<p>Only Energy User/Coincident Peak Demand and Energy User/Energy plots are possible:</p> <p>In the New Group dialog box, Meter and Demand option buttons are disabled.</p> <p>In the Open Group dialog box, only Energy User/Coincident Peak Demand and Energy User/Energy groups are listed.</p> <p>When scheduled plot jobs for groups other than Energy User/Energy and Energy User/Coincident Peak Demand run, an error message is written to the error log file.</p>
E-BILL32 (engbill32.mdb)	<p>Only Meter/Demand plots are possible:</p> <p>In the New Group dialog box, Energy User and Billing Period buttons are disabled.</p> <p>In the Open Group dialog box, only Meter/Demand groups are listed.</p> <p>When scheduled plot jobs for groups other than Meter/Demand run, E-Trend writes an error message to the error log file.</p>
E-Trend32 (etrendl32.mdb)	<p>Automatic Mode, Scheduler Configuration, Open Group, Save/Save As Group, Copy From Group, Add View, Delete View, and Go To View options are disabled.</p> <p>The Automatic Scheduler does not run, so no scheduled plots are generated.</p>
Both E-LOG32 and E-BILL32	<p>Only Exit, Go To View, and Delete view functions are possible.</p>

