

# Before You Begin

---

## Who Should Read this Guide

This guide contains information about installing and using the PowerNet Software applications.

This guide assumes that you have a working knowledge of Microsoft Windows and that you can perform basic tasks such as moving, sizing, and switching between windows, using the scrollbar, and so on. If you are new to the Windows environment, it is strongly recommended that you read the Windows documentation or view the Windows on-line help or tutorial.

This section contains information you should be aware of prior to installing or using the PowerNet Software applications, including:

- ◆ How this guide is organized.
- ◆ The conventions used in this guide, such as how information is presented visually and how keyboard and mouse instructions are presented.
- ◆ How to contact Product Support.
- ◆ A list of additional documentation that might be helpful.

## How This Guide Is Organized

This guide is divided into the following chapters:

*Chapter 1: Overview* contains an overview of PowerNet Software applications, and how they inter-relate.

*Chapter 2: Installation* lists the hardware and software required to run PowerNet Software, provides step-by step instructions for installing PowerNet Software on your computer, and lists the items you should receive when you purchase PowerNet Software.

*Chapter 3: Quick Start* serves as an overview to setting up all PowerNet Software applications.

*Chapter 4: NetPower DeviceServer* contains information on the purpose and function of a NetPower DeviceServer, and describes how to import and export a NetPower DeviceServer license. This chapter also describes NetPower DeviceServer polling and control.

*Chapter 5: Database Synchronization* contains information on master and local databases, describes how synchronization works, and provides the procedure for database synchronization.

*Chapter 6: Logging On and Off* describes how to start, log on and off, and exit a PowerNet Software application.

*Chapter 7: NetPower License Manager* describes how to assign, transfer, or upgrade/update a license on a computer running a PowerNet Software application.

*Chapter 8: NetPower Security Manager* describes how to assign security privileges, including assigning and modifying passwords, and limiting specific functions and devices to PowerNet Software users.

*Chapter 9: Configuring the System* describes the configuration tasks you need to perform before using the PowerNet Software applications, including how to set up communication parameters and device polling rates. This chapter also explains how to print and manage your configurations.

*Chapter 10: Configuring NetPower Setpoints & Trip Curve* describes how to view and modify device setpoints, as well as how to view device trip curves.

*Chapter 11: NetPower Tools* describes how to use the various utilities for merging and archiving databases.

*Chapter 12: Troubleshooting* contains a list of FAQs associated with the PowerNet Software applications, as well as FAQs associated with the Modbus subsystem.

*Appendix A: Status/Reason Codes* contains a description of each status code and reason code that can be generated by PowerNet Software.

*Appendix B: Device Objects* contains a series of reference tables that identify, for each device, the data elements that you can access, the control commands that you can use, the setpoints, and relevant information about each.

*Appendix C: ODBC Administrator* describes how to access databases for the applications.

*Appendix D: Addresses/Data Source Names* contains tables that list whether a PowerNet Software application requires a static IP address, and whether the application requires an ODBC driver. Also listed are Data Source Names and the default database file names corresponding to each PowerNet Software application.

*Appendix E: NetPower Integrator* describes the purpose and function of NetPower Integrator and NetPower Monitor ActiveX.

*Glossary* defines terms commonly used throughout the system.

*Index* contains a comprehensive reference list of PowerNet Software terms along with the pages in this manual on which they occur.

## Document Conventions

This guide uses certain conventions to describe how to perform tasks and to help you locate information quickly. These conventions are categorized as follows:

- ◆ Visual—how information is visually presented in this manual.
- ◆ Keyboard—how keys and keystrokes are represented in this manual.
- ◆ Mouse—how you will be expected to use a mouse. For example, an instruction to click on an item means that you should point to the item and click once with the left mouse button.

The following sections describe these conventions in detail.

### Visual

This guide uses certain visual cues to emphasize important information.

Background or reference information is placed in a *note box*. An example is shown below.

#### Note

Information relevant to the task is located in a note box.

Information that is critical or which might warn you about a potential problem is placed in an *important box*. An example is shown below.







#### Important

Information important to completing the task or warning you of possible problems is located in an important box.

You will sometimes be instructed to *type* a command. For example, during installation, you might choose to manually type the command **a:\setup.exe** rather than using the Browse button to find and select the setup file. When instructing you to type specific words or characters, this manual will show the words or characters in bold. What you should type is shown in lowercase letters unless it must be typed in uppercase or mixed case to work properly.

## Keyboard

The keyboard contains certain function and non-typing keys. Windows controls the functions that many of these keys perform. In addition to their standard Windows uses, some keys have a specific use in the PowerNet Software applications. The following table identifies the keys that are used in the applications, indicates how they are represented in this guide, and lists the tasks they perform:

Key	Represented As	Purpose
	[Home]	Moves the locator bar to the beginning of the line or list
	[End]	Moves the locator bar to the end of the line or list
	left arrow	Moves the locator bar left one position
	right arrow	Moves the locator bar right one position
	up arrow	Moves the locator bar left one position (same action as the left arrow)
	down arrow	Moves the locator bar right one position (same action as the right arrow)

Sometimes you will be required to press a combination of keys. For example, you might be instructed to press [Ctrl][P]. This means that you should hold down the [Ctrl] key and press the letter “P.”

Also, you can access any menu or command located in the main window by holding down the [Alt] key and pressing the underlined letter of the desired option. For example, you can access the File menu by pressing [Alt][F]. The Options menu would appear if you pressed [Alt][O], and so on.

You may enter information into a PowerNet Software application, using either the keyboard or the mouse. To enter information using the keyboard, see the section *Using the PowerNet Software Window Elements*.

## Mouse

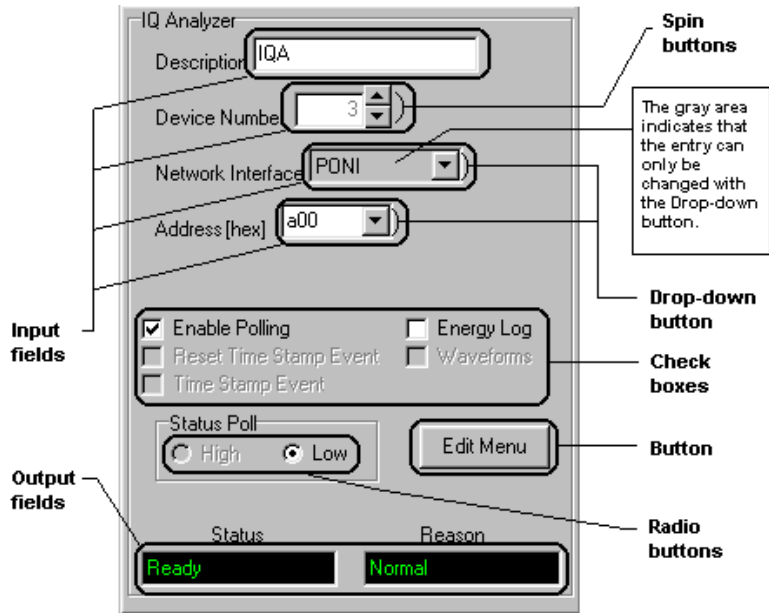
The following table contains mouse-related terms and information with which you should be familiar before using this guide. Please refer to the Microsoft Windows User Guide for more information about using a mouse.

Term	Description
Left mouse button	The primary mouse button, unless you have configured your mouse differently. When this guide instructs you to click on an item, you should point to it and press the left mouse button once. For information about configuring a mouse, refer to the Microsoft Windows documentation.
Right mouse button	The secondary mouse button, unless you have configured your mouse differently. Use the right mouse button only when this guide specifically instructs you to do so.
Pointer	The white arrow that you can move around the screen using the mouse.
Point	Means to position the pointer so that it is resting on the desired item on the screen.
Click	Means to quickly press and release the left mouse button once without moving the mouse. When this guide tells you to click on an item, you should point to that item and then click.
Double-click	Means to quickly press and release the left mouse button <i>twice</i> .
Drag-and-drop	Means to click on a selected item and hold the left mouse button while you move the cursor to another position. Once the cursor is in the correct position, you release the mouse button to drop the selected item in the new position.

You may enter information into a PowerNet Software application, using either the keyboard or the mouse. To enter information using the mouse, see the following section *Using the PowerNet Software Window Elements*.

## Using the PowerNet Software Window Elements

To enter information into a PowerNet Software application, you use either the keyboard or the mouse. The following picture shows a typical application window and its corresponding screen elements.



The following tables describe these window elements.

Window Element	Input
Input Field	Keyboard (Type a name or number. If the input field is grayed out, the entry can only be selected with the drop-down button.)
	Mouse (Click the spin buttons to increment a number)
	Mouse (Click the drop-down button to pick from a list of options)
Button	Click to open or close a dialog box, or to enable or clear input settings.
Check box	Click to enable feature/clear to disable feature; multiple selections are allowed.
Radio button	Click to enable feature; only single selections are allowed.

The convention that will be used throughout this manual will be to instruct you to type information in a particular input field.

The convention that will be used throughout this manual will be to instruct you to read information that displays in a particular output field.

## **Product Support**

The Eaton Corporation provides several types of technical support for the IMPACC PowerNet family of products. The following sections describe each type of support.

### **Help Desk**

The Power Management Application Support help desk is available 24-hours a day, seven days a week to assist you with your problems or questions.

For help by phone, please call 1-800-809-APSC(2772) or (412) 490-6714.

By fax, dial (412) 490-6712.

You can also reach the support group by mail. Comments or suggestions should be directed to:

Eaton Corporation  
Cutler-Hammer Westinghouse Products  
Power Management Application Support  
240 Vista Park Drive  
Pittsburgh, PA 15205

### **Fax Retrieval of Engineering Documents (FRED)**

You can receive product information and application notes via the Fax Retrieval of Engineering Documents system. FRED permits you to request and receive information immediately via a fax machine.

To reach FRED use your fax machine to call (412) 490-4710, then follow the instructions provided. FRED will ask a series of questions to which you will respond by pressing keys on your fax machine. When finished, FRED will send the requested information to your fax machine.

## **Additional Documentation**

Other documents that you might find helpful include:

### **Modbus Protocol Reference Guide**

This guide contains detailed information about the Modbus protocol.

## Subnetwork, Communications, and Component Documents

Device	Document Number *	Document Title
AEM II (Assemblies Electronic Monitor)	TD 17216	Assemblies Electronic Monitor
	DB 8175	Assemblies Electronic Monitor II
	SA 1587A	Assemblies Electronic Monitor II
BIM (Breaker Interface Module)	IB 29C893	Instructions for Installation, Operation and Maintenance of Breaker Interface Module
CED (Central Energy Display)	DB 8178	IQ Central Energy Display
	TD 17527	IQ Central Energy Display
CMU (Central Monitoring Unit)	CS 8226	ADVANTAGE NEMA Rated Full-Voltage Magnetic Contactors and Starters
CONI III (Computer Operated Network Interface)	IL 17436 (replaces IL 17199)	Instructions for Computer Operated Network Interface Used with IMPACC Networks
MINT (Master INCOM Network Translator)	IL 17200	Instructions for Master INCOM Network Translator
	IL 17466	Instructions for Master INCOM Network Translator II
PONI (Product Operated Network Interface)	IL 17158A	Instructions for Product Operated Network Interface Cards Used in INCOM Networks
	IL 17361	Instructions for Product Operated Network Interface Used with Incom PowerNet Networks
	IL 17202A	Instructions for RS232 PONI Product Operated Network Interface Module

\* CS–Catalog Section, IB–Instruction Book, SA–Sales Aid, DB–Descriptive Bulletin, IL–Instructional Leaflet, TD–Technical Document



## Device-Related Documents

Device	Document Number †	Document Title
Accutrol 400	DB	Accutrol 400 Adjustable Frequency Motor Control
Addressable Relay	IL 17196A (model A)	Instructions for Addressable Relays Used in INCOM
Addressable Relay II	IL 17435 (model B)	Instructions for the Addressable Relay II Used in the INCOM Networks of IMPACC Systems
Advantage	CS 8226	ADVANTAGE NEMA Rated Full-Voltage Magnetic Contactors and Starters
	SA 11870	Advantage Motor Control Technical Data
Advantage Control	CS 8226	ADVANTAGE NEMA Rated Full-Voltage Magnetic Contactors and Starters
Advantage Control Module (ACM)	CS 8226	ADVANTAGE NEMA Rated Full-Voltage Magnetic Contactors and Starters
AF97	IL9075A05	Installation, Setup, and Maintenance Manual
Analog Input Module (AIM)	Not Yet Available	
Digitrip 1150	Not Yet Available	
Digitrip 3000	IL 17555	Instructions for Installation and Maintenance of the Cutler-Hammer Digitrip 3000 Protective Relay
Digitrip MV	32-266	Digitrip MV
	SA 12020	Westinghouse Digitrip MV Circuit Protection
	DB 33-750	Digitrip MV Trip Unit
	IB 33-740	Instructions for Installation, Operation and Maintenance of Digitrip MV

Device	Document Number †	Document Title
Digitrip OPTIM	IL 29C890	Instructional Overview for Use of the Digitrip OPTIM Trip Unit System
	IL 29C891	Instructions for Installation, Operation and Maintenance of Westinghouse Digitrip OPTIM
	IL 29C892	Instructions for Operation of Westinghouse OPTIMizer Hand Held Programmer
Digitrip RMS	SA 11581A	Digitrip RMS
Digitrip RMS T700	IL 29-853	Digitrip RMS T700
Digitrip RMS T800 and T810	IL 29-854	Digitrip RMS T800
Digitrip RMS T910	IL 29-889	Instructions for Westinghouse Digitrip RMS 910
IQ 500	CS 8177	IQ-500 Modular Overload Relay
	TD 17287A	The IQ-500 Modular Overload Relay
IQ 1000, IQ 1000 II	TD 17194	IQ 1000
	SA 11488	IQ 1000
	DB 8173	IQ 1000 II
IQ Analyzer	DB 8179	Westinghouse IQ Analyzer
	TD 17530	Instructions for the installation, operation, and maintenance of the Westinghouse IQ Analyzer Electrical Distribution System Monitor
IQ Data	DB 8171	IQ Data
	TD 17283B	IQ Data Line Metering System User's Manual
IQ Data Plus, IQ Data Plus II	TD 17195	IQ Data Plus Line Metering and Protection System User's Manual
	SA 11479	IQ Data Plus

Device	Document Number †	Document Title
	DB 8170	IQ Data Plus II
	TD 17271A	IQ Data Plus II Line Metering and Protection System User's Manual
IQ Data Plus II HV	DB 8176	IQ Data Plus II HV
	TD 17296	IQ Data Plus II HV Line Metering and Protection System User's Manual
IQ DP 4000	TD 17548	Instructions for Installation, Operation and Maintenance of IQ DP 4000 Electrical Distribution System Monitor
IQ Generator	DB 8172	IQ Generator
	TD 17284B	IQ Generator Line Metering System User's Manual
IQ Sentinel	DB 8178	IQ Energy Sentinel
IQ Power Sentinel	IL 17553	Installation Instructions for IQ Power Sentinel - Internal CT
MPCV	IB 35-581B	(MPCV)
Universal RTD	IL 7367	Instructions for Universal Resistance-Temperature Detector (RTD) Module

† CS=Catalog Selection; IB=Instruction Book; SA=Sales Aid; DB=Descriptive Bulletin; IL=Instructional leaflet; TD=Technical Document

